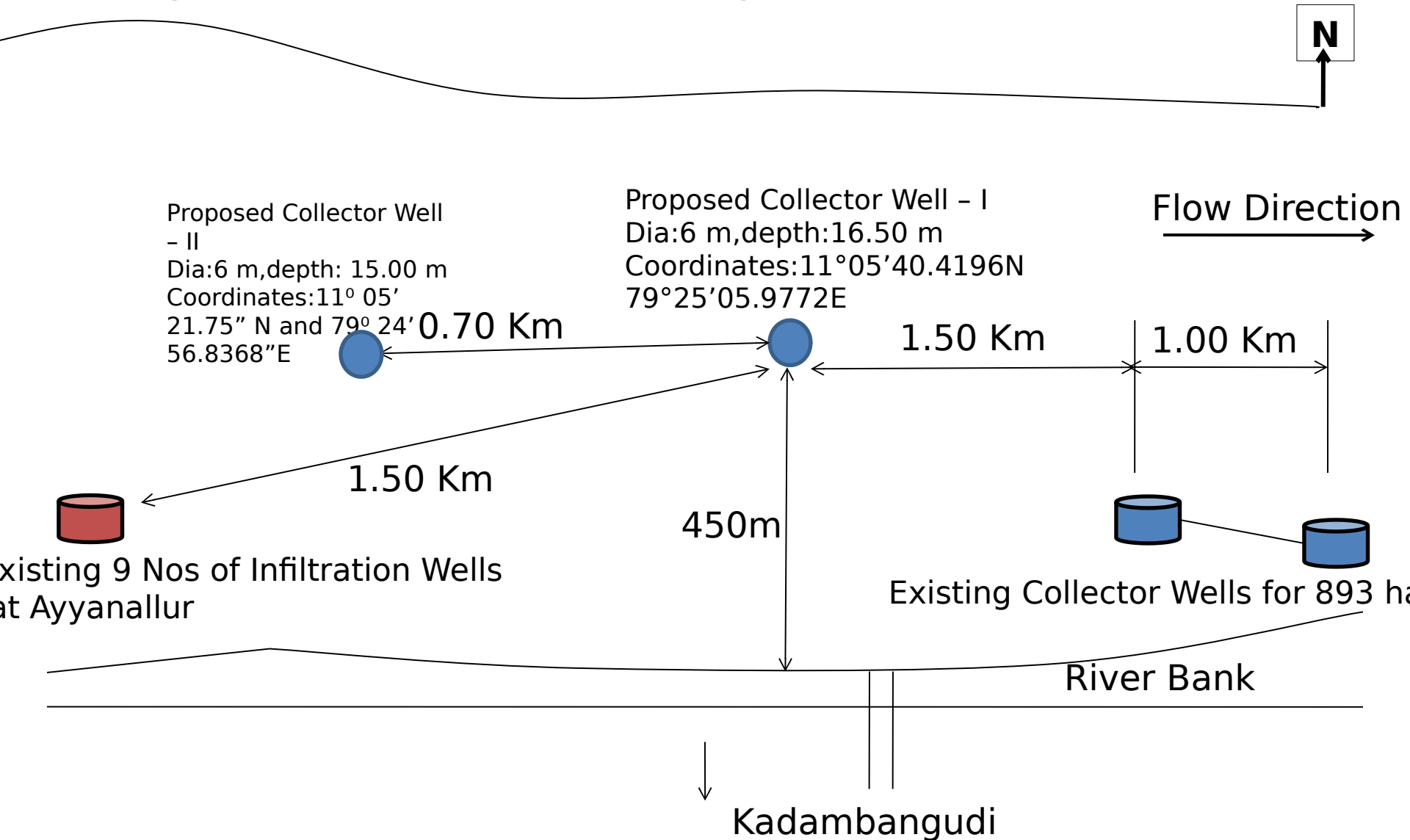
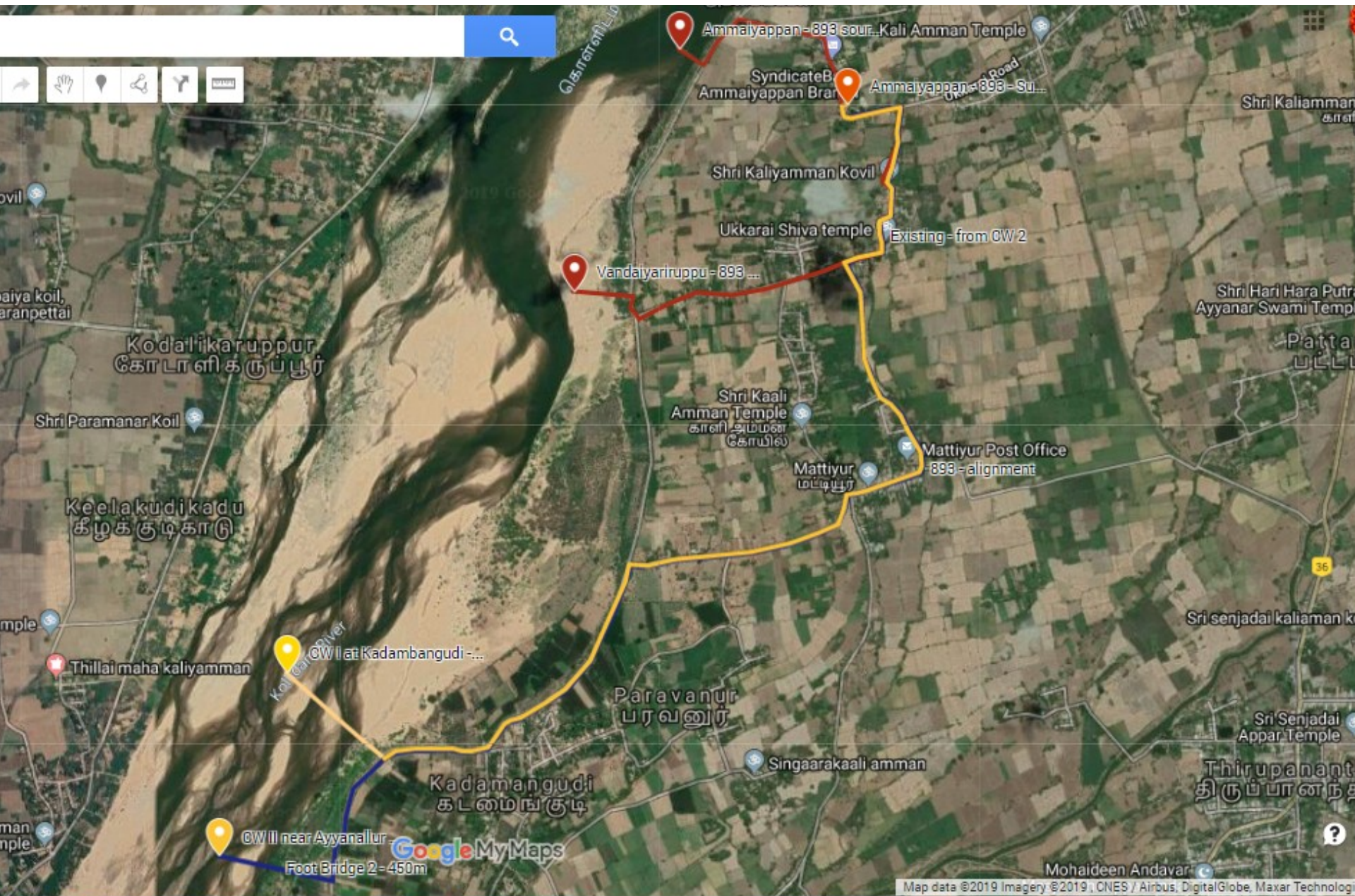


Sketch showing the Additional source investigation Zone for 893 habitations in Nagapattinam District at Kadambangudi & Ayyanallur in River Kollidam



Additional source source with pump house to CWSS to 893 habitations in Nagapattinam District – Index Map



Additional source source with pump house to CWSS to 893 habitations in Nagapattinam District – Flow Diagram

River Kollidam

Existing Collector Well at Ammaiyappan

Depth: 12.00 m

Existing Collector Well at Vandayariruppu

Depth: 16.00 m

Collector Well I at Kadambangudi

Depth: 16.50 m

GL: 18.00 m

FVL: 4.50 m

Collector Well II near Ayyanallur

Depth: 15.00 m

GL: 18.00 m

FVL: 6.00 m

**450 PSC
4KSC**

1065m

**700 PSC
4KSC**

1985m

**450
CI D/F**

6250/6250 450 DI 4500m

500m

K7

6250/6250 450 DI 5150m

K7

**450
CI
D/F**

450m

Existing Collection Sump at Ammaiyappan

CAP: 20.00LL

GL: 24.24 m

MWL: 28.24 m



To Thirumarugal Sump

CWSS to 893 habitations in Nagapattinam District (existing) along with the proposed Additional sources

FLOW DIAGRAM

